

## MODEL: CQDH18C



AC  
EPS



### Advantages:

#### SAFETY AND STABILITY

- AC motor drive with high efficiency, no need to replace carbon brush, very good ramp starting performance.
- Two model function can control the speed of lift and lowering.
- Low center of gravity, excellent stability for operation.
- Small turning radius, good turning performance.
- With advanced variable frequency AC motor free maintenance and excellent performance.
- Can control the speed of driving and lifting in the same time.
- Shock absorber system support good noise reduction.
- Wide view mast and clear visibility.
- With full free lifting, can work in the limited roof environment.
- Import proportional hydraulic valve, adjustable speed for lifting/lowering.
- Multi-function display: battery status, hour meter, fault code, slow running state, etc
- Big power controller (350A) with big power electric motor (10KW), support excellent reliability.
- Double scissors reach fork let the reach distance up to 1000mm.
- The mast fixed with the frame, when fork move forward, the mast can become the balance weight, reduce the total service weight.



Multi function display.



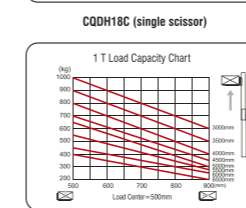
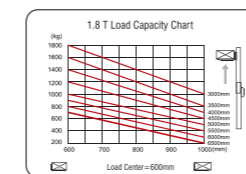
Control handle with integrated thumb stick, allows smooth operation of (1) Travel, (2) Lift/low, (3) controls Tilt and Fork Reach.

- With advanced 36V electric control system, smaller electric current, ensure the reliability of the battery system.
- High speed of lifting and lowering, 300% faster than normal type truck.

#### STRUCTURAL

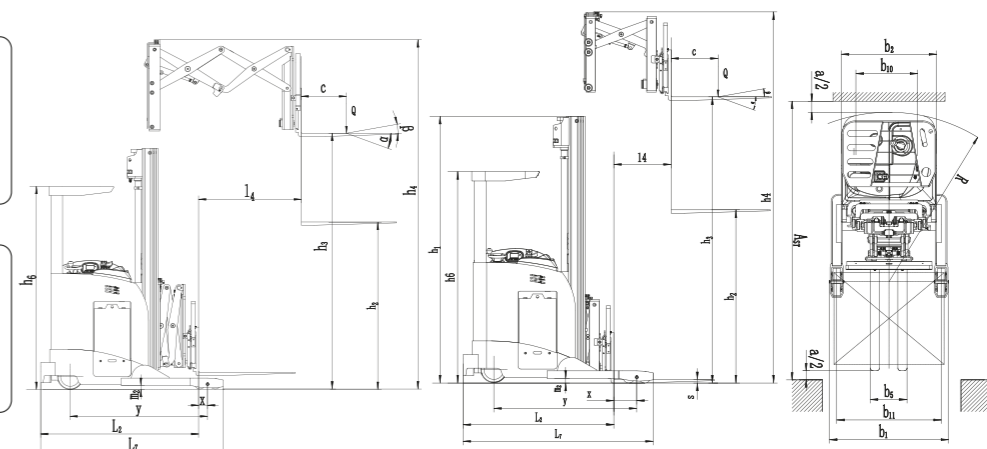
- Side way battery is very convenient to do maintenance and replace batteries.
- CANbus technology reduces wiring complexity, making the line clear and orderly, increases the truck's reliability and easy to repair.
- The Mast can be separate from the frame, very good interchange ability (option).

General Information	1.2 Manufacturer's type designation		CQDH18C (single scissor)		CQDH18C (double scissor)	
	1.3 Drive: electric (battery type, mains, ...), diesel, petrol, fuel gas			Electric		Electric
1.4 Operator type: hand, pedestrian, standing, seated, order-picker			Standing		Standing	
1.5 Rated capacity/rated load	Q (kg)		1800		1000	
1.6 Load centre distance	c (mm)		600		600	
1.8 Load distance, centre of drive axle to fork	x (mm)		246		123	99
1.9 Wheelbase	y (mm)		1522		1522	
Weight	2.1 Service weight	kg	3310/3360/3410	3550/3650/3750/3850/3950	3410/3460/3560	3700/3800/39000/4000/4100
	2.3 Axle loading, unladen front/rear	kg	1270/2380		1322/2478	
	2.4 Axle loading, fork advanced, laden front/rear	kg	3480/1970		3083/1717	
	2.5 Axle loading, fork retracted, laden front/rear	kg	3330/2120		2933/1867	
	3.1 Tyres: solid rubber, superelastic, pneumatic, polyurethane		Polyurethane		Polyurethane	
Tyres	3.2 Tyre size, front		Φ280×100		Φ280×100	
	3.3 Tyre size, rear		Φ125×82		Φ125×82	
	3.4 Additional wheels (dimensions)		Φ160×60		Φ160×60	
	3.5 Wheels, number front/rear (x = driven wheels)		1x+2/4		1x+2/4	
	3.6 Tread, front	b10 (mm)	673		673	
3.7 Tread, rear	b11 (mm)	1140		1140		
Dimensions	4.1 Tilt of mast/fork carriage forward/backward	a/b (°)	2/5		2/5	
	4.2 Height, mast lowered	h1 (mm)	2125/2375/2625	2185/2345/2505/2675/2835	2125/2375/2625	2185/2345/2505/2675/2840
	4.3 Free lift	h2 (mm)	N/A	1575/1700/1825/2000/2125	N/A	1575/1700/1825/2000/2125
	4.4 Max. lift height	h3 (mm)	3000/3500/4000	4500/5000/5500/6000/6500	3000/3500/4000	4500/5000/5500/6000/6500
	4.5 Height, mast extended	h4 (mm)	3900/4400/4900	5400/5900/6400/6900/7381	4035/4535/5035	5535/6035/6535/7035/7535
	4.7 Height of overhead guard (cabin)	h6 (mm)	2246		2246	
	4.19 Overall length	l1 (mm)	2716		2585/2820	
	4.20 Length to face of forks	l2 (mm)	1618		1726/1750	
	4.21 Overall width	b1/b2 (mm)	1298/1040		1298/1040	
	4.22 Fork dimensions DIN ISO 2331	s / e / l (mm)	40/100/1070		40/100/1070	
	4.23 Fork carriage ISO 2328, class/type A, B		2A		2A	
	4.24 Fork-carriage width	b3 (mm)	940		940	
	4.25 Fork spread	b5 (mm)	200-680	200-680	200-680	200-680
	4.26 Distance between wheel arms/loading surfaces	b4 (mm)	982		982	
	4.28 Reach distance	l4 (mm)	500		1200	
	4.31 Ground clearance, laden, below mast	m1 (mm)	49		49	
	4.34.1 Aisle width for pallets 1000 × 1200 crossways	Ast (mm)	3013		3110/3131	
	4.34.2 Aisle width for pallets 800 × 1200 lengthways	Ast (mm)	3085		3197/3220	
	4.35 Turning radius	Wa (mm)	1848		1848	
4.37 Length across wheel arms	l7 (mm)	2023		2023		
Performance Data	5.1 Travel speed, laden/unladen	km/h	6.5/7.0		6.5/7.0	
	5.2 Lift speed, laden/unladen	m/s	0.20/0.30		0.20/0.30	
	5.3 Lowering speed, laden/unladen	m/s	0.32/0.312		0.32/0.312	
	5.4 Reaching speed, laden/unladen	m/s	0.1	0.1	0.1	0.1
	5.8 Max. gradeability, laden/unladen	%	5/12		5/12	
	5.10 Service brake		Electromagnetic		Electromagnetic	
Motors	6.1 Drive motor rating S2 60 min	kW	3.0(AC)		3.0(AC)	
	6.2 Lift motor rating at S3 15%	kW	10.0(AC)		10.0(AC)	
	6.4 Battery voltage/nominal capacity K5	(V)/(Ah) or kWh	36/700		36/700	
	6.5 Battery weight	kg	810		810	
Additional Data	10.7 Sound pressure level at the driver's seat	dB (A)	75		75	



CQDH18C (double scissors)

▲ Subtract 200kg With Sideshifter



### DIMENSIONS